



Characterization of doped polyaniline by linear mode of MALDI-TOF MS method

M.E.Raja Saravanan* and S.Sivakumar

Department of Physics, Government Arts College (Autonomous), Salem-636 007, Tamilnadu, India.

ARTICLE INFO

Article history:

Received: 28 March 2013;

Received in revised form:

11 May 2013;

Accepted: 25 May 2013;

Keywords

Polyaniline,
Doped PANi,
MALDI-TOF MS,
Molecular weight.

ABSTRACT

Polymers, the synthetic materials have truly unique properties. The polymers are a very special kind of compounds, which do not behave like small molecules do, but the properties of polymers depend on molecular weight and molecular weight distribution (MMD). The molecular characterization of PANi base synthesized chemically by condensation method is attempted using MALDI-TOF MS technique. Further the study is extended on doped PANi with two different strengths (0.01N, 1 N) of dopant HClO₄. The detailed descriptions of the method of TOF (Time of Flight) and the molecular weight determination of the PANi base and its doped form as conducting polymers have been studied quantitatively and strength of the dopant on the molecular characterization is also identified.

© 2013 Elixir All rights reserved.

Introduction

In recent times the narrow perspective about the carbon based polymers as insulators have been changed to as a new class of polymer called intrinsically conductive polymers or electro active polymers. The potential uses of conductive polymers are quite significant today. Their characterization study in determining the molecular weight is vital part of the present study.

Materials and Method

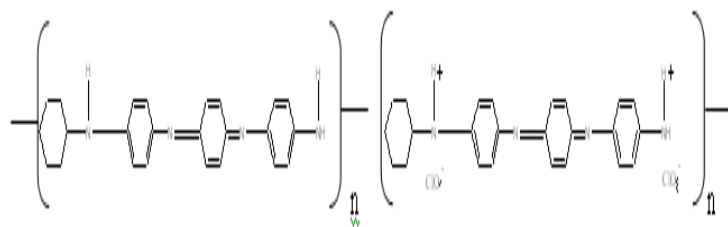
Aniline is polymerized to polyaniline(PANi) by chemical method with electrical conducting properties. Their conductivity was also enhanced upon doping with an oxidizing or reducing agent (Terje Skotheim, 1986). The molecular weights of the new class of synthetic metals are in the range between thousand to hundreds of thousand with their structural units of monomer recurring structurally (Dinesh Chandra Trivedi, 1994). Dopant induces bond alterations resulting in increased electrical conductivity (Mool et al, 1994) between 10 to 100 S/cm.

The MALDI-TOF MS instrument from Bruker Daltonics(Germany) used the ultraviolet laser(Nitrogen) at the wavelength of 337nm. The Operating pulse rate is 50 Hz and ions accelerated at 20kv. The samples were analyzed by operating in linear mode. Then ions were detected using micro channel plate (MCP). Dihydrobenzoic (DHB) acid was used as matrix and the samples were dissolved in Ethanol.

The molecular weight and molar-mass distribution of a polymer sample is a critical determinant of its material characteristics (Wyatt N. Vreeland et al, 2001). The determination of the molecular weight (MW) and molecular weight distribution (MWD) (Mool et al, 1994) using MALDI-TOF-MS requires only pico moles of samples, comparing with Gel Permeation technique (GPC). Also a time of 10 minute is sufficient to sensitively give the detailed information of the sample. The single monomer resolution of the samples up to ~20kDa in molar mass is also possible in MALDI-TOF-MS (Kazuya Itoda, 2003).

Results and Discussion

Time of flight mass Spectrometry (TOF-MS), a separation-in-time technique, is one in which ions are spatially separated. The time needed by the ions pockets to travel the length of the drift region (the time of flight) can be related to the mass of the ions. The molecules of 1,000,000 amu and greater have been analyzed on this technique (Bush, 1997; Haining Ji et al, 2002). It is found that the molecular weight of the base and its doped polymer as 3645.116 da 3406.886 da and 3479.342 da respectively. The decrease in molecular weight on doping may be attributed to the link breakages or the solubility of monomer in the acid doping.



Molecular structure of Polyaniline (Base) Figure 1

Molecular structure of Polyaniline+ HClO₄-(1N and 0.01N) Figure 2

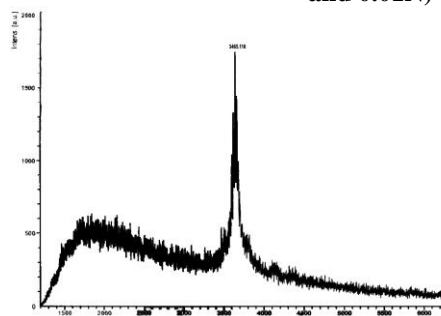


Figure 3 MALDI-TOF MS PANi base

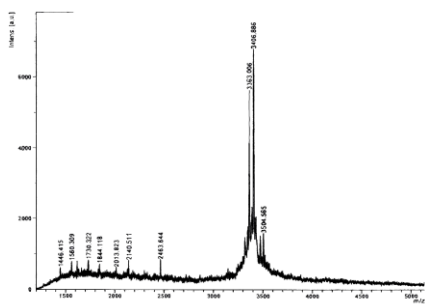


Figure 4 MALDI-TOF MS PANI+ HClO₄(1N)

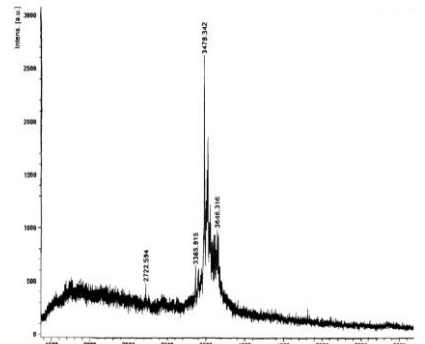


Figure 5 MALDI-TOF MS PANI+ HClO₄(0.01N)

References

1. Bush, K. 1997 Spectroscopy, 12 22.
2. Dinesh Chandra Trivedi. 1994. Dopant induced solubilization of conducting polyaniline. Indian Journal of Chemistry, 33A PP. 552-557.
3. Haining Ji Nobuyuki Sato, Yo Nakamura, Yunan Wan, Amy Howell, Quinn A. Thomas, Robson F. Storey, William K. Nonidez and Jimmy W. Mays. 2002 Charecterization Of Polyisobutylene by Matrix-Assisted Laser Desorption Ionization Time-of-Flight
4. Mass Spectrometry,. Macromolecules,. 35: 1196-1199.
5. Kazuya Itoda, Eiichi Tamiya and Kenji Yokoyama. 2003. Evaluation of the molecular recognition of peptide- conjugated polymer. Analytical Sciences,. 19: 185 – 187.
6. Mool C Gupta and DC Sindhimesham. 1994. Polaron lattice-spinless defects in conducting organic polymers. Indian Journal of Chemistry, 33A pp. 558-560.
7. Terje A. Skotheim , 1986 Hand Book of Conducting Polymers Vol. 1. Page 362.
8. Wyatt N. Vreeland , Claude Desruisseaux, Achim E. Karger, Guy Drouin, Gary W. Slater, and Annelise E. Barron. 2001. Molar mass profiling of synthetic polymers by Free-solution capillary Electrophoresis of DNA – Polymer conjugates,. Anal.Chem.,73 : 1795-1803.